

2.5-D DUNGEON LIX LAIR OF THE DRAGON GOD

www.WorldWorksGames.com

THANK YOU FOR YOUR SUPPORT!

Hwww...they grow up so fast don't they? One minute you are nurturing them after incubating the eggs for years and the next thing you know they are off being worshiped by ignorant townsfolk.

Seriously though I want to take this opportunity to thank you for purchasing this model set. We have had some pretty horrific issues with piracy over the past couple years and because of that; now more than ever WorldWorks needs your support. WorldWorks is well known around the world but sadly our efforts can't compete with the pitfalls of file sharing. We are a small business and your actions have a direct and dramatic affect on our ability to get by. I know it's tempting to share but you have to understand that it is killing us slowly. Spread the word, just please don't spread the file. Respect that and we will do everything in our power to keep exceeding your expectations.

On behalf of the WWG crew,
my sincerest thanks for your support!

Denny Unger

Owner/Designer
WorldWorks Games



2.5-D DUNGEON LIX LAIR OF THE DRAGON GOD

www.WorldWorksGames.com



- **CARDSTOCK:** 110lb White Cardstock or 80lb Coverstock.

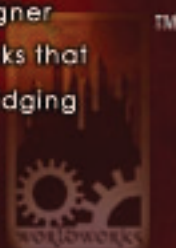
- **GLUE PEN:** Low water content glue pen. WorldWorks recommends the UHU Office Pen (No. 99589) due to its ease of application, quick adhesion and non-warping low water content. This is hands down the best glue pen you can use for this craft (and we've tested MANY). If you can't find it at your local office supply or craft store then order it online.

- **METAL RULER & HOBBY KNIFE:** If you want your models to have a professional finish and absolute precision then the only thing to do is throw away those dull baby scissors. By using a proper straight edge ruler and hobby knife in combination you will speed up your workflow and come away with an amazing end result (you probably won't go back to scissors again either).

- **BLACK MARKERS:** By "Edging" your finished models you will eliminate the white card edge and or fold lines, producing an end product worthy of even the most finicky gamer. This is a MUST!

FREE VIDEO TUTORIALS!

Join us online for absolutely free video tutorials! Your host Denny Unger (owner & model designer WorldWorks Games) steps you through in very easy to follow installments. Learn the tips & tricks that master cardstock modelers use to achieve incredible results. Materials, Cutting, Gluing and Edging are all covered in an entertaining and detailed format. www.WorldWorksGames.com



DUNGEON LINX™

LAIR OF THE DRAGON GOD

www.WorldWorksGames.com

PLAN YOUR LAYOUT!



Interactive Model Planner

Before printing a single page you can take advantage of WorldWorks Games exclusive IMP layout system (Interactive Model Planner). The IMP software is included absolutely FREE with 'DungeonLinX: Lair of the Dragon God'. Rotate, flip and position each tile in your layout to explore every possibility. Once you are happy with your freshly created layout you can print off a thumbnail view of the plan for reference in-game and to help you build the real thing!



2.5-D DUNGEON LIX™ LAIR OF THE DRAGON GOD

www.WorldWorksGames.com

HELPING YOU BUILD YOUR WORLD!

WorldWorks takes you by the hand and gives you easy to follow, fully photographed and professionally executed instructions. Each component is broken down into logical sections to help you build your World with absolutely no guesswork. Packed full of tips and tricks WorldWorks continues to raise the quality bar. All of that backed by our 24/7 community support and FREE video tutorials on cardstock modeling at www.worldworksgames.com. Why settle for less?



2.5-D DUNGEON LIX LAIR OF THE DRAGON GOD

www.WorldWorksGames.com

2-D TILES & 3-D PROPS 2.5-D A BEAUTIFUL THING!

Always striving to be different, WorldWorks has combined the best of both terrain worlds. Enter the world of what we like to call '2.5-D'. The idea behind 2.5-D is to remove the interference of walled structures but to simultaneously include vital, quick build 3-D props which enhance gameplay and realism. Packed full of 2-D tiles and 3-D props this product is sure to please both the casual tile maker and the 3-D terrain builder alike.



© copyright WorldWorks Games 2006. All Rights Reserved



2.5-D DUNGEON LINX™ LAIR OF THE DRAGON GOD

www.WorldWorksGames.com

PAPER TILE MOUNTING & LINX™

Now we can begin experimenting on board. Take 3 sections out of your hobby knife and tack it into position.

Once you've made the cuts pull the remaining tab out through the bottom of the tile. You should hear a satisfying "SNAP" as the tab hits the back.

We help you to increase the durability and extend the longevity of your tiles by giving you the knowledge to apply proper mounting techniques. You can opt to mount using a standard method or take it a step further with WorldWorks exclusive 'PaperLinX' mounting system. Using a series of unique, hidden connectors built right into your tiles you can add further stability to your on-the-fly layouts. .

Lay your ruler down along the length of the board and start knocking things down with care to make sure pieces

PLEASE NOTE: We are not making this actual tile but y'all but we are making it right easier to make around before the actual cutting begins. Don't worry about pieces not being perfect but to get into any of the tiles

at two broken things
inside supports,
of cutting

mounted we c
art tiles.

It's possible



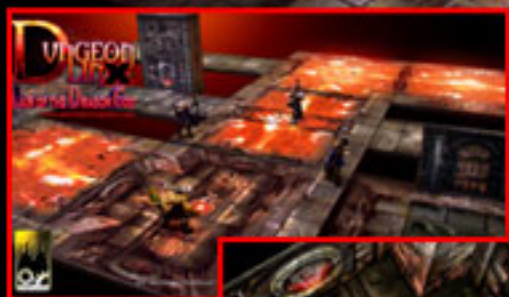
DUNGEON LIXTM

LAIR OF THE DRAGON GOD

www.WorldWorksGames.com

ENDLESS POSSIBILITIES

With over 40 unique tile elements the layout possibilities are endless. All your generic corridors and rooms are covered in both false perspective and "no walls" versions letting you choose which style suites your tastes. Corridor floors come in two unique texture styles. Add to that an extensive lava network with controlled lava outflow states showing both full and empty lava chambers (Imagine the devious scenarios you could come up with). To further add a touch of danger we have included a series of pitfall tiles that can be placed where needed. 3-D doors can be opened and closed and the lava pillars come in a variety of active states.



© copyright WorldWorks Games 2006. All Rights Reserved



DUNGEON LIX™

LAIR OF THE DRAGON GOD

www.WorldWorksGames.com

DID WE MENTION THE DRAGON?

What "Lair of the Dragon God" model set would be complete without a dragon? Built with simplicity in mind while still maintaining an organic form, this dragon is sure to spark fear into your players! And best of all, you can build more than one!



DUNGEON LIX

2.5-D

MAIR OF THE DRAGON GOD

www.worldworksgames.com



ALL MATERIALS COPYRIGHT 2006 WORLDWORKS GAMES. ALL RIGHTS RESERVED ©



DUNGEON LIX

2.5-D

MAIR OF THE DRAGON GOD

www.worldworksgames.com



ALL MATERIALS COPYRIGHT 2006 WORLDWORKS GAMES. ALL RIGHTS RESERVED ©
Figures shown for scale only.





DUNGEON LINUX LAIR OF THE DRAGON GOD

www.worldworksgames.com



ALL MATERIALS COPYRIGHT 2005 WORLDWORKS GAMES. ALL RIGHTS RESERVED ©

DUNGEON LINK

25-D

LAIR OF THE DRAGON GOD

www.worldworksgames.com



ALL MATERIALS COPYRIGHT 2006 WORLDWORKS GAMES. ALL RIGHTS RESERVED ©
Figures shown for scale only.



DUNGEON LINK

LAIR OF THE DRAGON GOD

www.worldworksgames.com



ALL MATERIALS COPYRIGHT 2006 WORLDWORKS GAMES. ALL RIGHTS RESERVED ©