



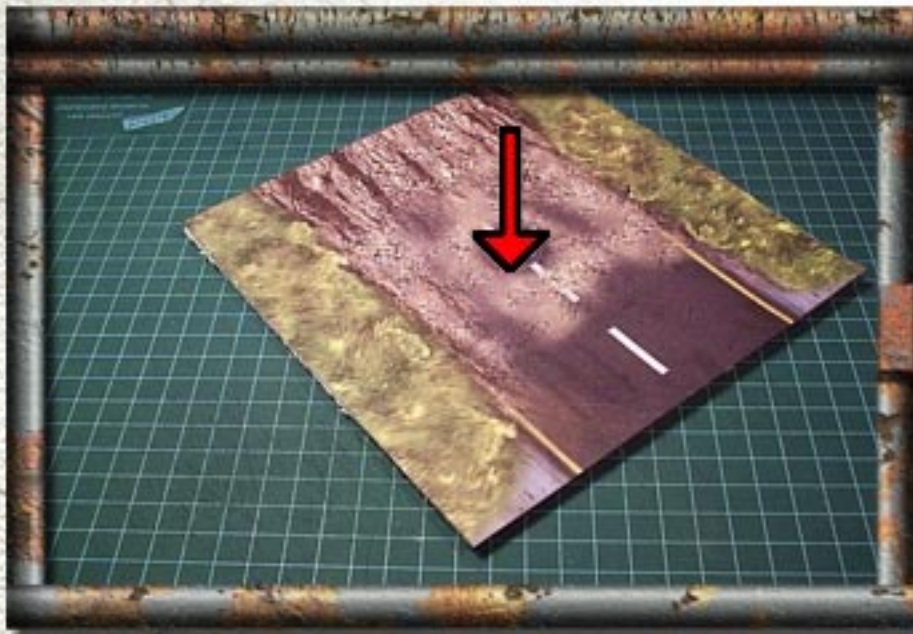
PART 1

BASING AND GROUND Tiles



Basing is the literal foundation of your Junkyard model. To ensure your build goes together as smoothly as possible, proper planning is essential.





Groundtiles can be put together in one of three ways: The first and simplest is to cut out, edge and glue the tile down to a piece of foamcore, then cut away the excess.

Learn all about edging and other top tips in the tutorials section at www.worldworksgames.com

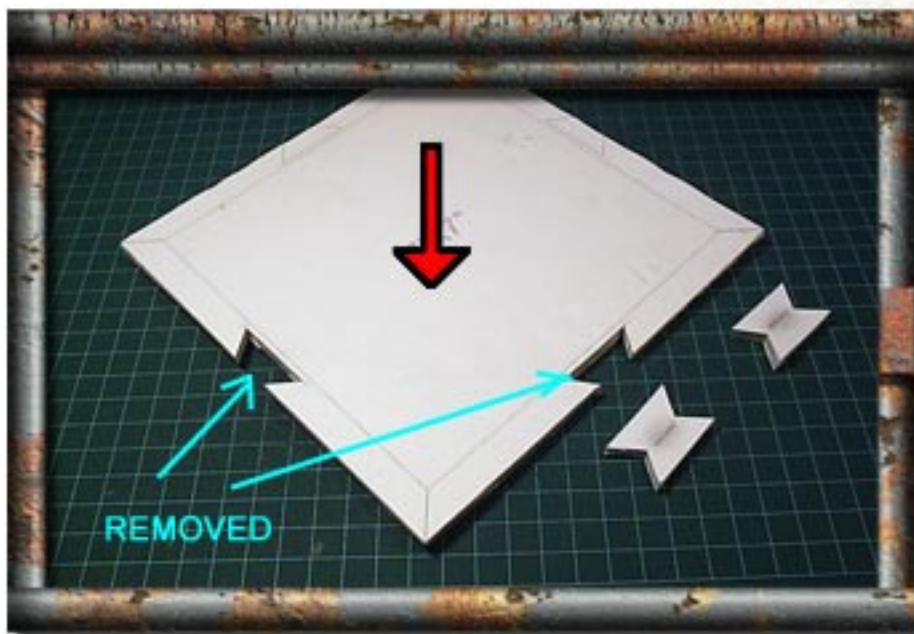
The second method is to cut out, edge and glue a lot of tiles to a single piece of foamcore to create a large playing surface called a "masterboard".



If you go the masterboard route, you should take a moment to plan it out by making a sketch or using a paint program so you know which tiles you need to print.

A masterboard can be any size, from two tiles to six, to twenty or more!





The third method is to create PaperlinX tiles.

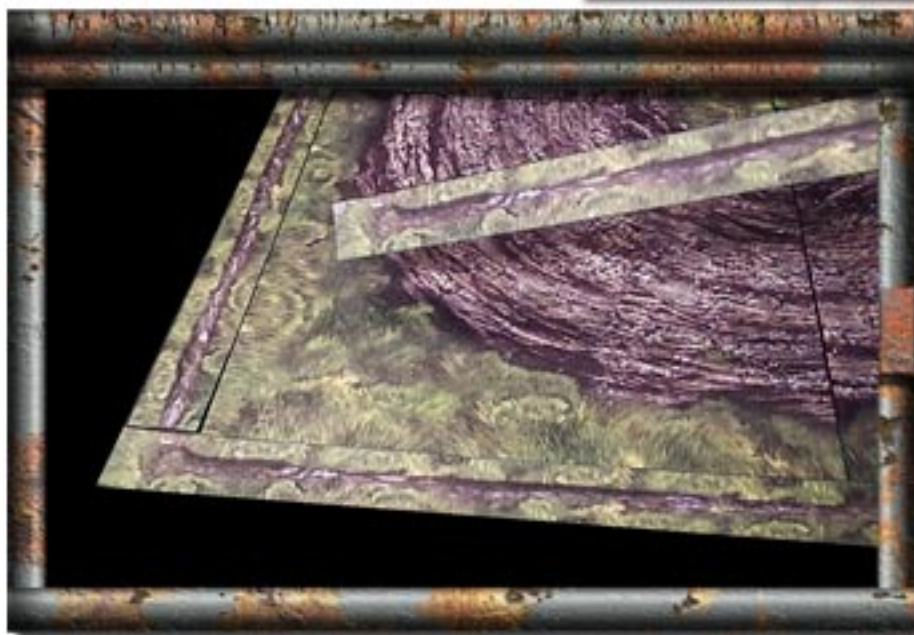
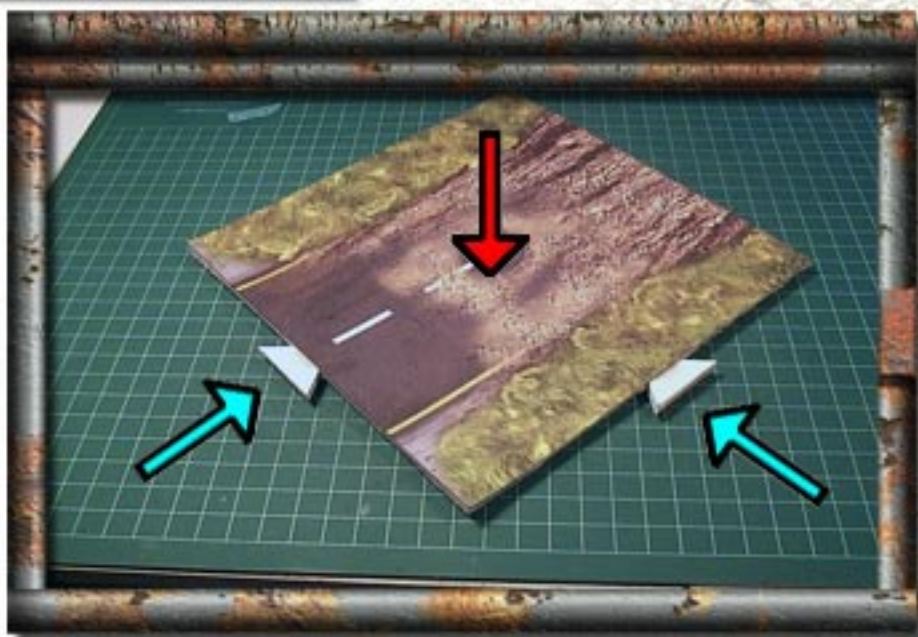
To do this, first cut out and glue down the provided template in the correct scale (gridless tiles use the 7"x7" template).

When dry, carefully cut out the notches on each side of the template and the individual PaperlinX tabs as shown.

Glue your tile down over the PaperlinX template as shown and re-edge as necessary.

Once dry, linX tabs can be inserted from beneath to hold the tiles together during gameplay.

DO NOT glue the tabs in place!



As a decorative touch, drainage ditches are provided to help clean up the edges of your masterboard.

Each ditch features either a corner or a drain pipe at one end which can be trimmed off to make a straight ditch.

