

SWIFT SCENICS™

THE ***"BUILD IT BIG, BUILD IT FAST!"*** TERRAIN SYSTEM

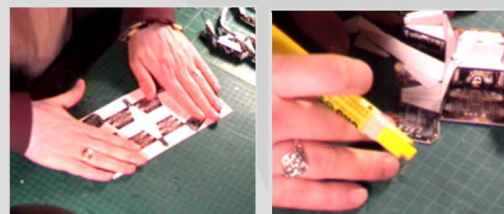


WORLDWORKSGAMES™

Methods & Materials

Need Help? Video Tutorials & Guides

FREE video tutorials, downloadable *Beginners Guide to Cardstock Modeling* & 1000's of user generated help topics available at www.worldworksgames.com (see "Tutorials" or join us on the "Forums")



Basic Materials

We recommend 8-1/2" X 11" 110lb cardstock or 80lb coverstock for strong model construction, a cutting pad, a cheap utility or hobby knife, extra blades, a metal cork backed ruler, and an assortment of felt markers (Black, Grey, Yellow, Brown).



Glue & Gluing Options

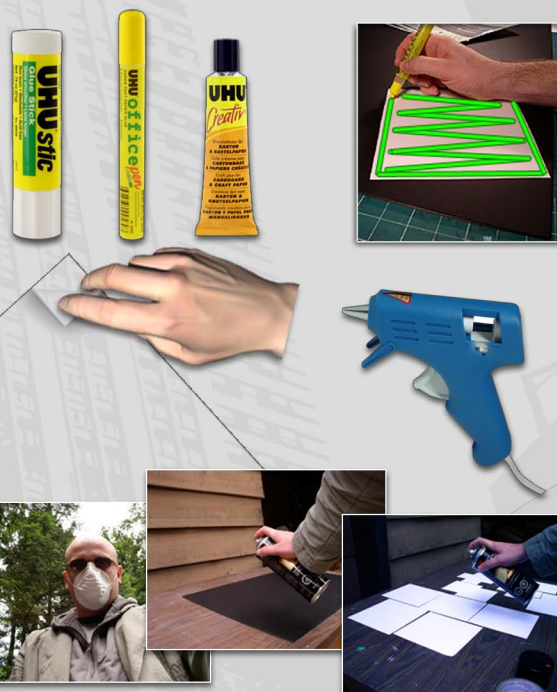
Gluing options break down into 4 basic techniques; Spraymount, Gluepen, Adhesive Papers & Hot Glues.

Gluepen: For pure cardstock construction, use a low water content gluepen, gluestick or bottled glue specialized for paper-craft. The only way to prevent warping is to ensure that your glue is specifically designed for use with paper. Most hobby and office supply stores carry papercraft glues.

Adhesive Paper: Useful for mounting graphics to foamcore, these full 8.1/2"X11" sticky backed sheets of printer paper can be found at most office supply stores or online. Adhesive paper allows you to print your pages, cut them out and then "peel & stick" each tile down with limited fuss.

Spraymounting: Another technique for graphic mounting involves the use of adhesive spray found at your local craft or hardware store. In an adequately ventilated room (or better yet outside) each page is sprayed on the reverse side and left to dry. The mounting surface itself is then given an additional light spray and left to dry. When the two surfaces come into contact there is an instant bond.

Hot Glue: In some situations nothing beats the rock solid connection made with a hot glue-gun. This is best utilized when gluing foamcore to other foam boards or when managing difficult to adhere materials.



Foamcore Mounting

WorldWorksGames recommends 3/16" thick black foamcore (display board). Other colors will suffice but we recommend black core foamcore due to its bond-friendly, matte finish and edging properties. This typically comes in 20" X 30" sheets and can be found at your local craft or office supply store.



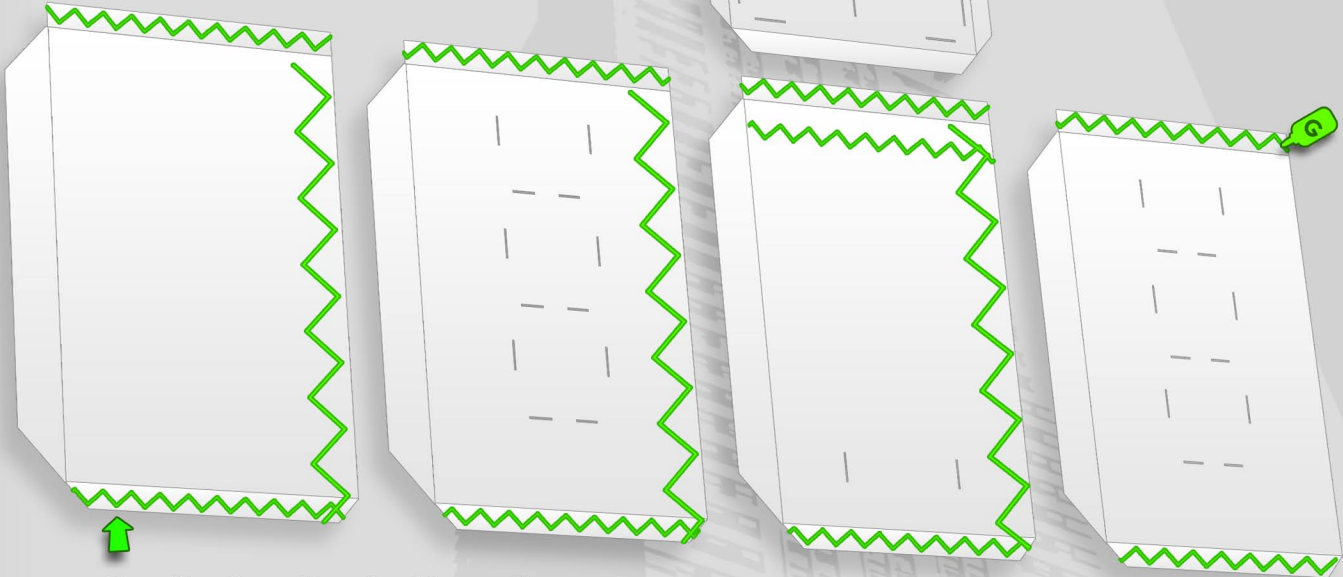
Walls & Roofing

SWIFT SCENICS SWIFT SCENICS SWIFT SCENICS SWIFT SCENICS

1

Don't forget to...

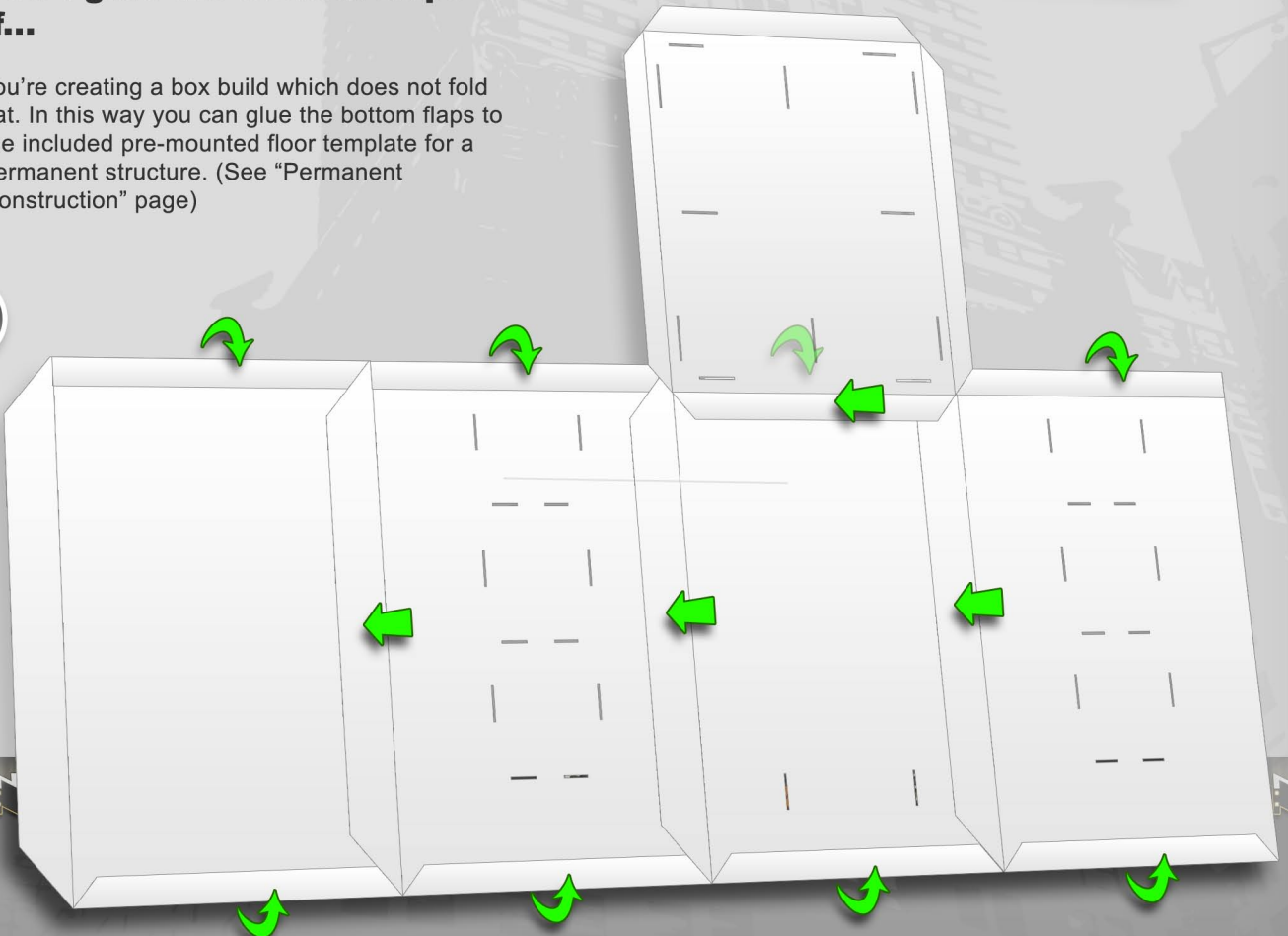
Cut away access slots for props and braces!



Don't glue the bottom flaps if...

you're creating a box build which does not fold flat. In this way you can glue the bottom flaps to the included pre-mounted floor template for a permanent structure. (See "Permanent Construction" page)

2



SWIFT SCENICS

SCENICS

Walls & Roofing

3

The Lid and Brace can be...

Left glued or unglued once in place, depending on whether you are constructing a permanent structure or a flat folding structure. (See "Permanent Construction" page)

Glue the front and back of each brace section together for additional strength.

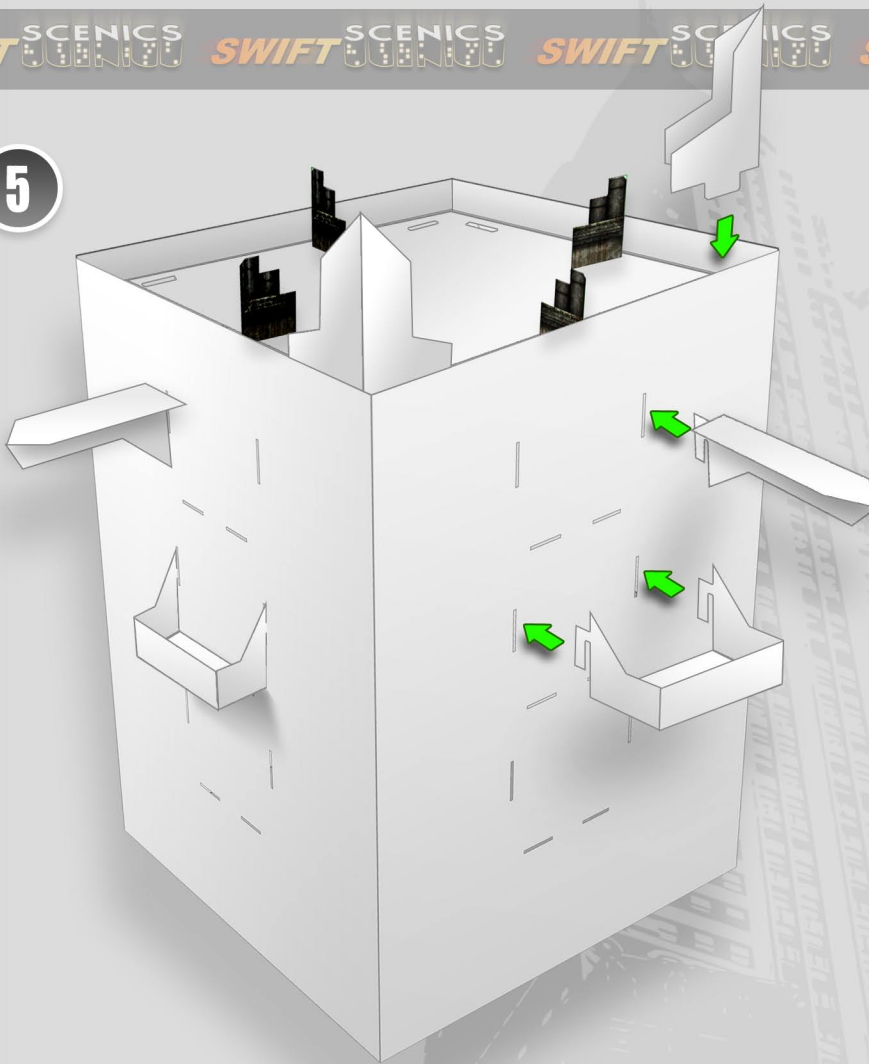
4

Insert the brace into the building inserting the chimney's into the roof slots.

Slotted Props & Stacking

SWIFT SCENICS SWIFT SCENICS SWIFT SCENICS SWIFT SCENICS SWIFT SCENICS

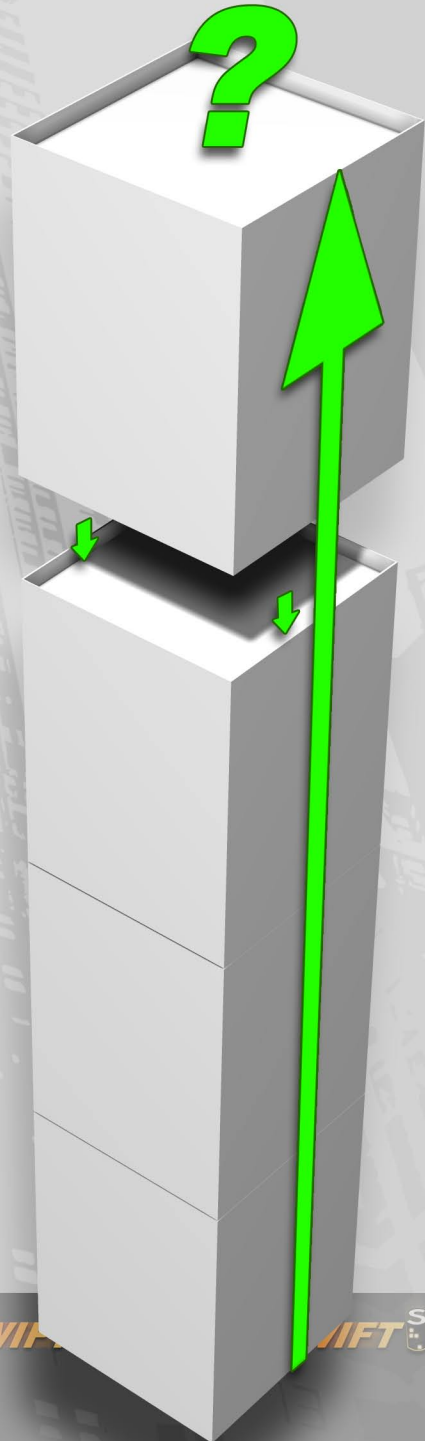
5



4

How High?

How high is too high? That's completely up to you! Each building module comes with a stacking ledge allowing you to stack several modules.



SWIFT SCENICS SWIFT SCENICS SWIFT SCENICS SWIFT SCENICS SWIFT SCENICS

Permanent Construction

SWIFT SCENICS SWIFT SCENICS SWIFT SCENICS SWIFT SCENICS SWIFT SCENICS

1. Glue the mounting template to foamcore.

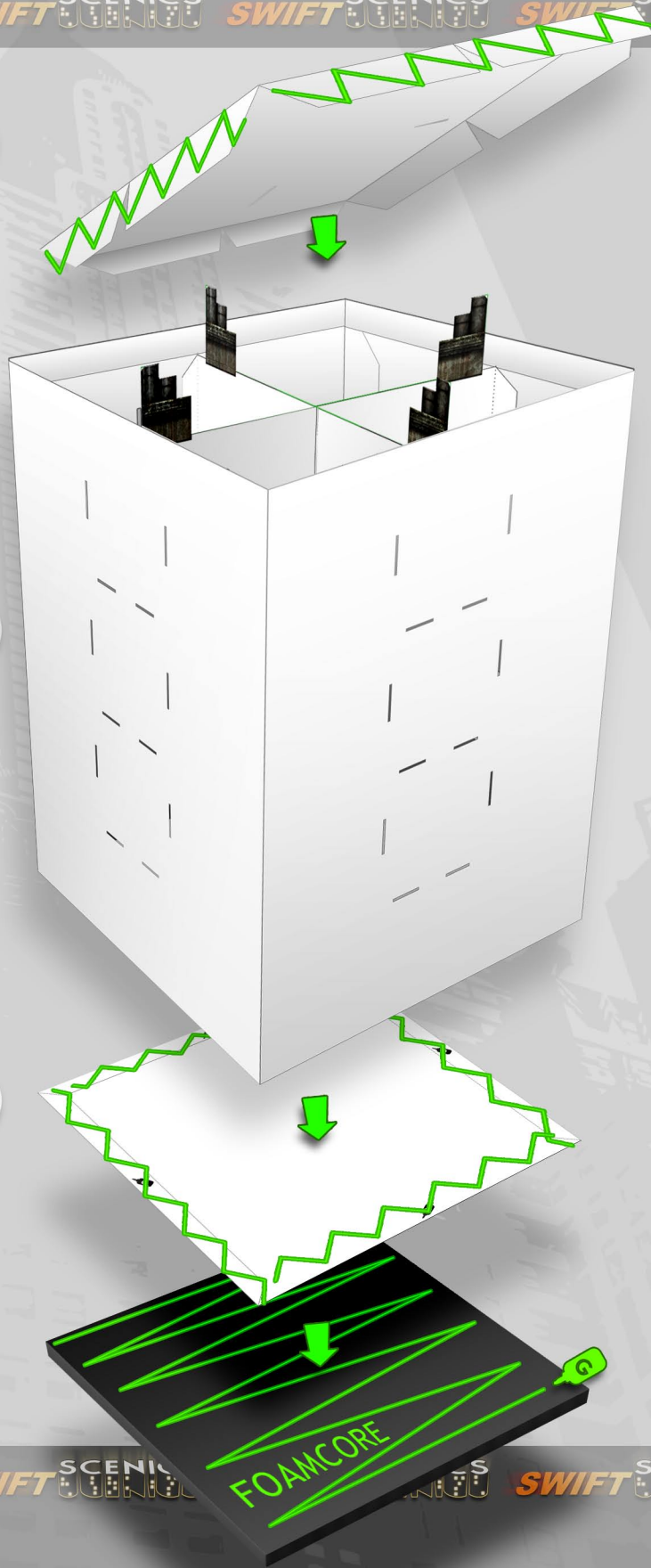
2. Glue the interior brace to the walls, then glue to bottom building flaps to the below mounting template.

3. Finish by gluing the roof in place.

3

2

1



SWIFT SCENICS SWIFT SCENICS SWIFT SCENICS SWIFT SCENICS SWIFT SCENICS

If You Enjoy It SUPPORT IT!

**Two things this small
business can't do without
your support**

- 1. Make more cool stuff*
- 2. Support our families*

**Please don't share it & if you can't support us
directly please do your best to spread the
word.**

Brought to you by the coalition of starving artists, who aren't corporate pigs,
who do this for a living... to eat.



SWIFT SCENICS SWIFT SCENICS SWIFT SCENICS SWIFT SCENICS SWIFT SCENICS

"BRINGING MAGIC BACK TO THE GAMING TABLE"

WORLDWORKSGAMES™



Join us on-line at the official
WorldWorksGames store!

Since 2002 gamers worldwide have been experiencing the WorldWorksGames difference! Join our thriving community of terrain enthusiasts in the community forums or get directly involved with terrain designers on upcoming projects! Our business is terrain and our mission is to make your tabletop dreams come true!

Our terrain line spans fantasy, modern, sci-fi, horror, pirate and so much more! We also produce a wide range of games, adventures, standees and creative game aids to enhance your gaming sessions. Visit www.worldworksgames.com and expand your experience with flash movies, user created kitbashes, free video and PDF tutorials, unparalleled 24/7 customer support via our massive community knowledgebase and e-mail support services.

We listen, we deliver, we care!

www.worldworksgames.com

